

PROJECT PROFILE

WALMART DISTRIBUTION CENTER, RIDGEVILLE, SC - TSX-8510



PROJECT DESCRIPTION

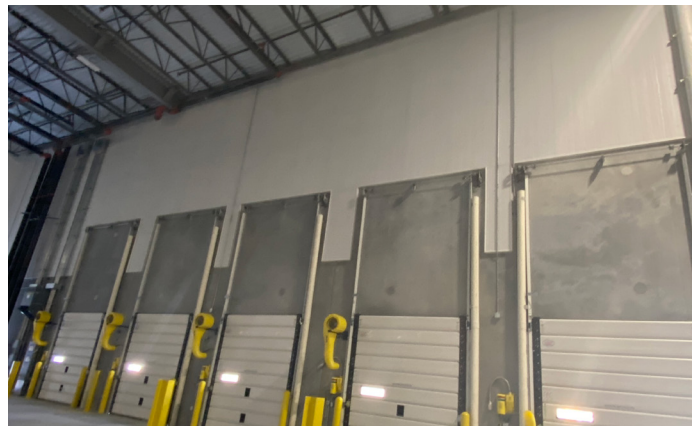
The almost 3-million-square-foot Walmart Import Distribution Center project sits on 230+ acres, equivalent to 52 football fields with a parking area large enough to fit 2600 trailers. This massive distribution center also offers 25,000 sq ft of office and maintenance space and 226 dock doors.

The architect on this project, Ware Malcomb, used Rmax TSX-8510 from 15' to ceiling to regulate temperature and offer a visually pleasing aesthetic appearance. During unprecedented times, Rmax and Ultra Commercial Insulation worked together to ensure product deliveries were uninterrupted, keeping the project on pace.

RMAX TSX-8510

TSX-8510 has glass fiber reinforced aluminum foil facers on both sides. The exposed side of the board is a heavy embossed 12mil facer with a white coated aluminum surface.

This thermally efficient insulation board is designed to be left exposed without a thermal barrier to provide an attractive interior finish.



Tilt Wall panels with TSX-8510 continuous insulation 15' to ceiling installed directly to the tilt wall, with Rmax R-Seal 3000W tape & PVC J-Channels on the interior walls for a clean finish look.



BUILDING TRUST



www.rmax.com | (800) 527-0890



WHY RMAX TSX-8510

TSX-8510 was chosen for this project as it reduces thermal bridging by being installed continuously. It blocks air, moisture and is mold resistant per ASTM D3273.

TSX-8510 meets R-value requirements with a thinner profile and is lightweight and easy to install.

ARCHITECT

Ware Malcomb
Irvine, CA

www.waremalcomb.com

GENERAL CONTRACTOR

Caddell Construction
Montgomery, AL

www.caddell.com

INSTALLER

Ultra Commercial Veterans Services
Alpharetta, GA

www.ultracommercialinteriors.com

DISTRIBUTOR

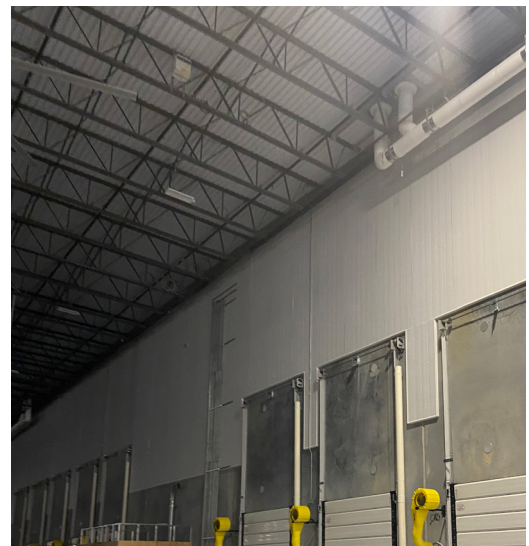
Builders Firstsource, Kennsaw, GA
L & W Supply, Doraville, GA

Location: Ridgeville, South Carolina

Project Size: 450,000 sq ft

Insulation: 1.25" & 2.00" TSX-8510

Completion Date: May 2021 - November 2021



BUILDING TRUST



www.rmax.com | (800) 527-0890