



PROJECT PROFILE

The Terraces - Port Aransas, Texas | Rmax Concrete Core-CGF



Project Description

The Terraces vacation properties are located on Mustang Island in Port Aransas, Texas. These beautiful 8-unit rentals are on 18-miles of family friendly beaches and just minutes away from the Port Aransas attractions.

The objective of this unique project was to create a low maintenance, energy efficient and durable home, that targeted beach vacationers. The property owners selected Coastal Fortified Homes to collaborate on the design and implementation to achieve this high level of performance. Rmax polyiso insulation was selected to provide a thermal layer of protection for energy efficiency.

The Terraces home's were constructed of pre-cast concrete "sandwich" panels, which consist of two reinforced wythes (layers) of concrete encasing 3" Rmax Concrete Core-CGF . These home's were engineered to withstand and protect against threatening storms with up to 200 MPH winds.

Rmax Concrete Core-CGF

The facer used on both sides of Concrete Core-CGF is a non-metallic, inorganic polymer coated glass fiber mat. This durable facer will not corrode nor react negatively with concrete. It also minimizes common corner damage which can happen with other unfaced or more flexible faced insulation materials.



Why Rmax Concrete Core-CGF

Concrete Core-CGF polyiso insulation, when used in a concrete insulated sandwich panel, offers a higher R-value per inch than other foam insulated panels. The product is designed for use in concrete sandwich panels where the insulation is positioned between two wythes (layers) of concrete and connected to both wythes by either metal or plastic ties. This product will assist in producing a thinner wall profile that increases the overall footprint of usable space for the project. Concrete Core-CGF is manufactured to meet ASTM C1289 Type II, Class 2 specification.

Concept/Builder

Coastal Fortified Homes

www.berkusconstruction.com

Engineer

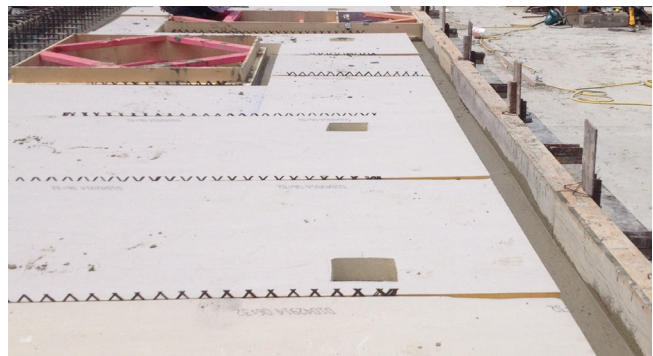
Consulting Engineers Group, Inc.

<http://www.cegengineers.com/>

Fabricator

Heldenfels Enterprises, Inc.

<http://heldenfels.com/>



Location: Port Aransas, Texas

Project Size: 6,000 sq.ft.

Insulation: Concrete Core-CGF

Project Timeline: March 2014 - January 2015