

PROJECT PROFILE

RMX ECOMAXCI® WALL SOLUTION

The Sheridan at Chesterfield Place
Chesterfield, Missouri

BUILDING SMART. BUILDING FOR THE FUTURE.

Environmental Impact with ECOMAXci® Wall Solution.

ECOMAXci® Wall Solution
eliminated the air barrier and
gypsum, preventing the equivalent
production of:

5,607,691 Plastic Straws or

428,224 Plastic Bags and

38,400 lbs of Gypsum

Sustainability and environmental impact estimates are based on materials per project sq. ft. of insulated coverage and modeling software (e.g. Athena).

PROJECT DESCRIPTION

The Sheridan at Chesterfield Place is a 92,000 square foot senior living space, with 62 assisted living and 25 memory care suites. The Sheridan at Chesterfield Place lends the residents farmhouse-style living with a terraced porch, stone foundations, gathering rooms, a movie theater and art studio.

Rmax worked with the design teams, providing assistance and detailing for the ECOMAXci Wall Solution. Rmax worked with the installer, Tj Wiess Contracting, Inc, reviewing and how to best use the step-by-step installation guide for ECOMAXci Wall Solution.

Rmax ECOMAXci® Wall Solution is composed of ECOMAXci® FR Air Barrier thermal insulation board and R-SEAL tape/flashing. ECOMAXci® FR Air Barrier is installed continuously to reduce thermal bridging and block air and moisture. It is lightweight and easy to install, contributing to overall savings. Combined with R-SEAL tape and flashing, Rmax ECOMAXci® Wall Solution has been tested to meet stringent fire code requirements and air and water barrier standards for the most effective, efficient building envelope design.



Assembly: Steel stud

TAKE ACTION.

Emissions being put into the atmosphere are causing significant and harmful effects on our communities, health, and climate. One step in reducing harmful emissions is by building with energy-efficient materials.

In addition to material and labor savings, ECOMAXci® Wall Solution eliminated approximately 50% of the negative environmental impact on this project by removing the air barrier and exterior gypsum.

Just Think - How much more can be saved by using ECOMAXci® Wall Solution on every building?

ENVIRONMENTAL impact categories*

74% Less Ozone Depletion Potential

64% Less Eutrophication Potential

38% Less Acidification Potential

33% Less Smog Potential

28% Less Non-Renewable Energy

26% Less Global Warming Potential

*Sustainability and environmental impact estimates are based on materials per project sq. ft. of insulated coverage and modeling software (e.g. Athena).

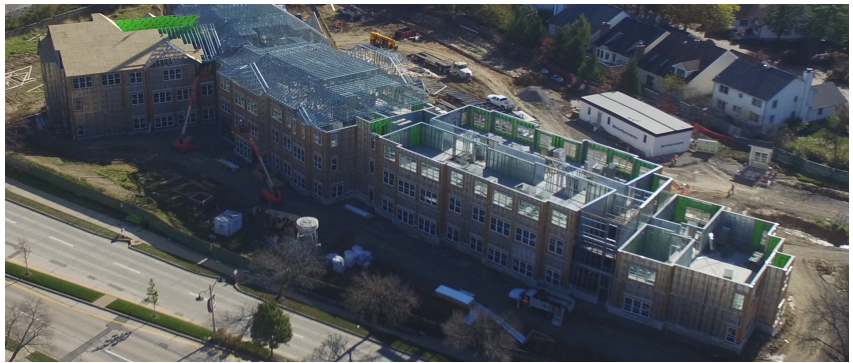
ARCHITECT

Lantz-Boggio Architects, Interior Design Associates, LLC

GENERAL CONTRACTOR Brinkman Constructors

INSTALLER

TJ Wiess Contracting, Inc.



Location: Chesterfield, Missouri

Project Size: 70,000 sq.ft

Insulation: 1.5" ECOMAXci® FR Air Barrier

Accessories: R-SEAL 2000 LF Timeline:

Completed 2017

